

HANDLES FOR ROOT ELEVATORS POINTS A, B, C, D



Truewin Dental Root Elevators

To look at one of these instruments you might mistake it for a narrow screwdriver.

That's because just like one an elevator has a handle and then a specially designed "blade" or tip portion.

How they're used.

The tip of an elevator is designed to be wedged into the ligament space between a tooth and its surrounding bone (as shown in our animation).

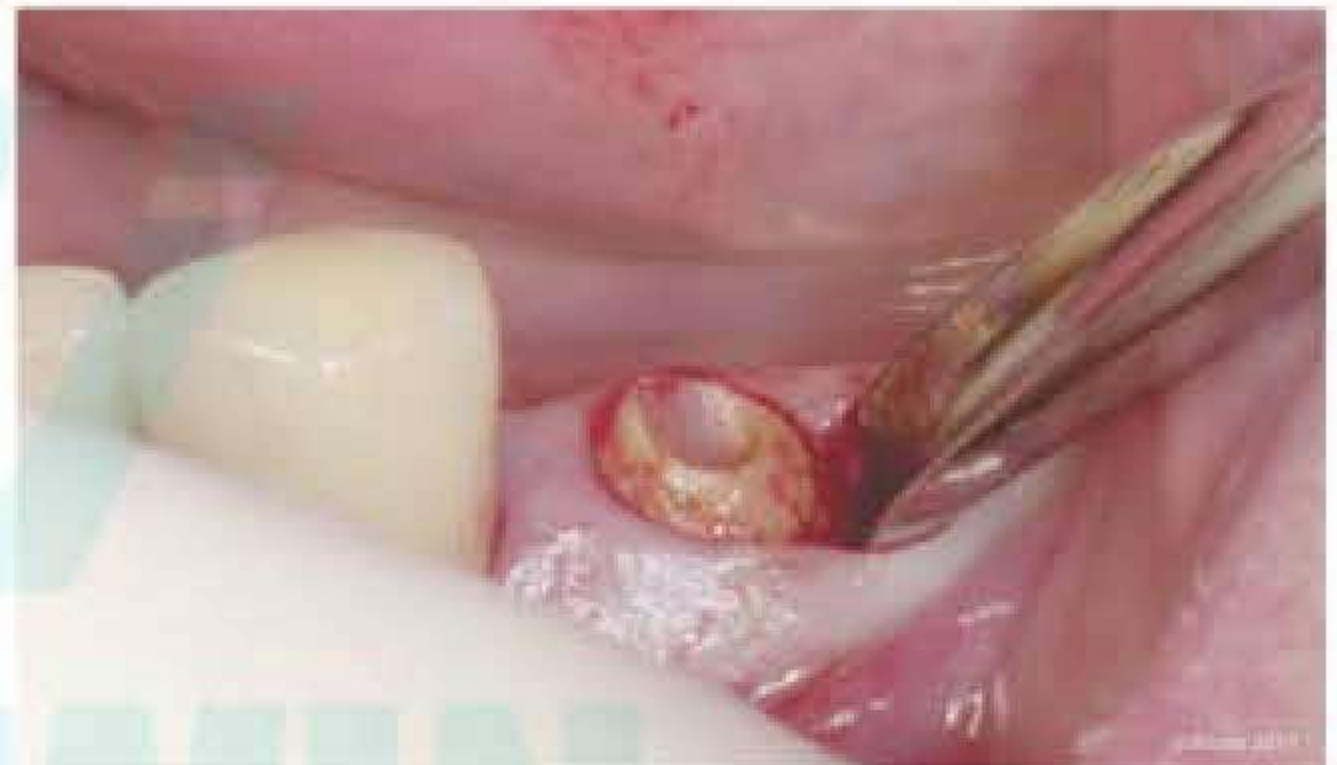
As the elevator is forced into and twisted around in this space, the tooth is rocked around and pressed against the walls of its socket.

This helps to both expand the shape of the socket and separate the tooth from its ligament.

As this work is continued, the tooth gradually becomes more and more mobile.

In some cases, the dentist may be able to completely remove the tooth just using their elevator.

If not, they will choose a point where they feel they have accomplished as much as they can with it and will then switch to using extraction forceps.



- Элеватор корневой экстракционный
- Elévateurs à racines
- Wurzelheber
- Elevator coronevii ekstraktsionnyy
- Elevadores para raices
- المصاعد الجذر

Apexo Root Elevators



Apexo Root Elevator



FUNCTION: To loosen tooth or root from bony socket prior to placement of the extraction forceps.



Luxator Root Elevators



Luxator Root Elevator



ROOT ELEVATOR



- Элеватор корневой экстракционный
- Elévateurs à racines
- Wurzelheber
- Elevator coronevii ekstraktsionnyy
- Elevadores para raices
- المصاعد الجذر

Apexo Root Elevators



Apexo
Root Elevator



TW2-13
Apexo
2.5x9mm
Straight



TW2-14
Apexo
2.7x9mm
Straight



TW2-15
Apexo
3.0x9mm
Straight



TW2-16
Apexo
2.5x9mm
Curved



TW2-17
Apexo
3.0x9mm
Curved



TW2-18
Seldin
3.0x14mm
Straight

Luxator Root Elevators



Luxator
Root Elevator



TW2-19
Luxator
3mm
straight



TW2-20
Luxator
3mm
curved



TW2-21
Luxator
4mm
straight



TW2-22
Luxator
4mm
curved



TW2-23
Luxator
5mm
straight



TW2-24
Luxator
5mm
curved

- Элеватор корневой экстракционный
- Elévateurs à racines
- Wurzelheber
- Elevator coronevii ekstraktsionnyy
- Elevadores para raices
- المصاعد الجذر

Bein Root Elevators



Seldin Root Elevators



- Элеватор корневой экстракционный
 - Elévateurs à racines
 - Wurzelheber
- Elevator coronevii ekstraktsionnyy
 - Elevadores para raices
 - المصاعد الجذر

Bein Root Elevators



Bein
Root Elevator

Seldin Root Elevators



Seldin
Root Elevator

- Элеватор корневой экстракционный
- Elévateurs à racines
- Wurzelheber
- Elevator corneviy ekstraktsionnyy
- Elevadores para raices
- المصاعد الجذر

Flohr Root Elevators



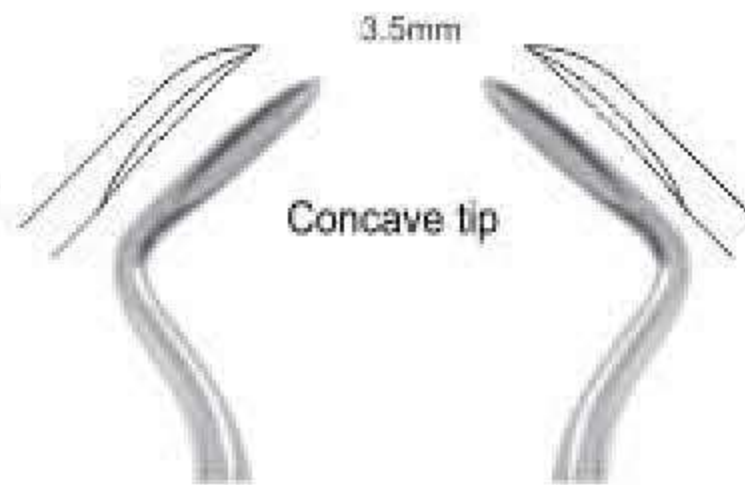
TW2-51
Fig. 1F
Str.
Flohr Root Elevators



TW2-52
Fig. 2F
Left
Flohr



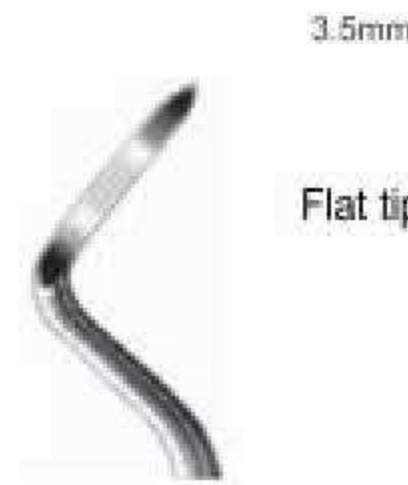
TW2-53
Fig. 3F
Right
Flohr



TW2-54
Fig. 4B SA
Schmeckebier
Apexo



TW2-55
Fig. 5B SA
Schmeckebier
Apexo



TW2-56
Fig. 4 SA
Schmeckebier
Apexo



TW2-57
Fig. 5 SA
Schmeckebier
Apexo

Coupland Root Elevators



TW2-58
Coupland No.1



TW2-59
Coupland No.2



TW2-60
Coupland No.3

Apical Root Elevators



Apical
Root Elevator



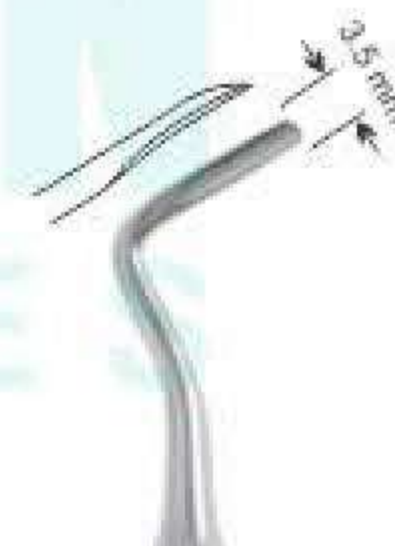
TW2-62
Apical 302
(Left)



TW2-63
Apical 303
(Right)



TW2-64
Apical 301



TW2-65
Apical 302



TW2-66
Apical 303



TW2-67
Apical 302A



TW2-68
Apical 303A



TW2-69
Fig. 304

Apical
Root Elevator

ROOT ELEVATOR



- Elevator корневой экстракционный
- Elévateurs à racines
- Wurzelheber
- Elevator корневий екстракційний
- Elevadores para raices
- المصاعد الجذر

Laxutor Root Elevators

Long Type



Laxutor Root Elevator



TW2-70
Laxutor
1.5mm
Str.



TW2-71
Laxutor
2mm
Str.



TW2-72
Laxutor
3mm
Str.



TW2-73
Laxutor
5mm
Str.



TW2-74
Laxutor
3mm
Cvd.



FUNCTION:

To loosen tooth or root from bony socket prior to placement of the extraction forceps.



TW2-75
Laxutor
5mm
Cvd.



TW2-76
Laxutor
3mm
Upper
Angle



TW2-77
Laxutor
3mm
Double
Angle



TW2-78
Laxutor
3mm
Str.



TW2-79
Laxutor
5mm
Str.



- Элеватор корневой экстракционный
- Elévateurs à racines
- Wurzelheber
- Elevator coronevii ekstraktsionnyy
- Elevadores para raices
- المصاعد الجذر

Cryer Root Elevators



Miller Root Elevators



ROOT ELEVATOR



- Элеватор корневой экстракционный
- Elévateurs à racines
- Wurzelheber
- Elevator coronevii ekstraktsionnyy
- Elevadores para raices
- المصاعد الجذر

Lindo Levian Root Elevators



Lindo Levian Root Elevator



Friedmann Roots Elevator



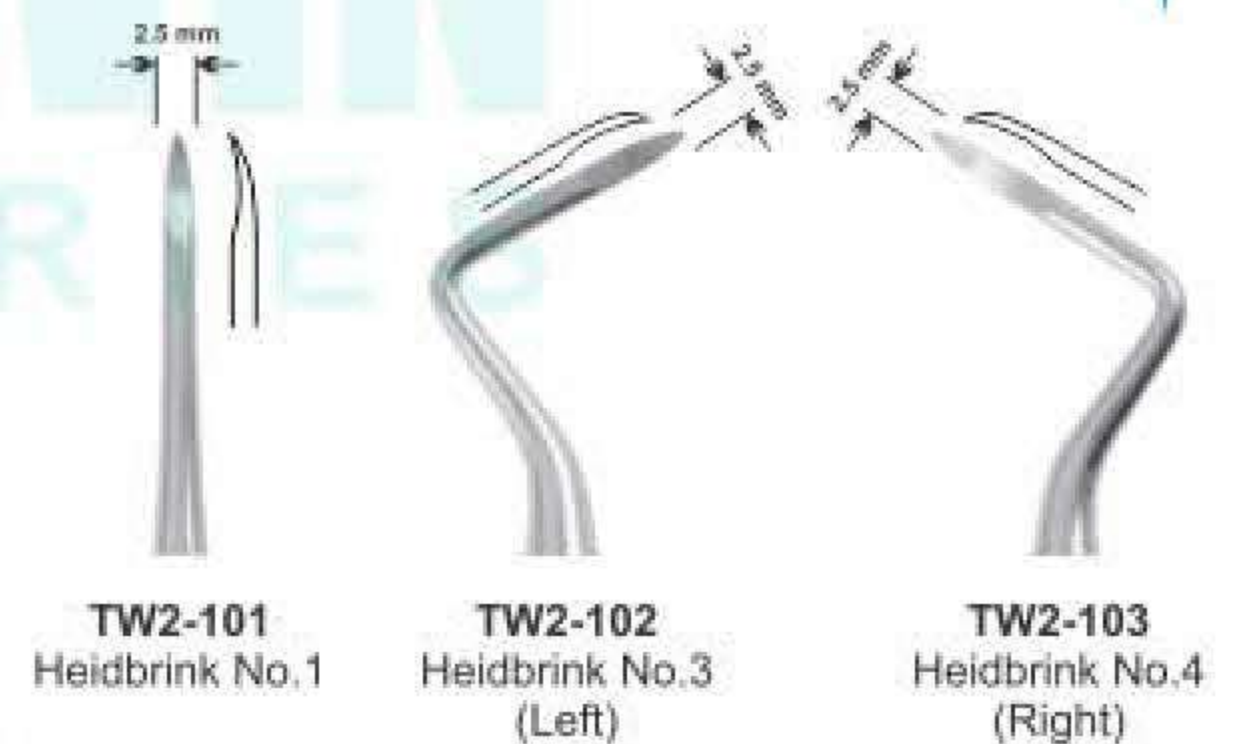
Friedmann Roots Elevator



Heidbrink Root Elevators



Heidbrink Root Elevator





ROOT ELEVATOR

- Элеватор корневой экстракционный
- Elévateurs à racines
- Wurzelheber
- Elevator coronevii ekstraktsionnyy
- Elevadores para raices
- المصاعد الجذر

Mesial & Distal Root Elevators



Root Elevators



TW2-104
Fig. 33
Mesial
2 mm

TW2-105
Fig. 34
Mesial
3 mm

TW2-106
Fig. 35
Mesial
4 mm

TW2-107
Fig. 36
Distal
2 mm

TW2-108
Fig. 37
Distal
3 mm

TW2-109
Fig. 38
Distal
4 mm

Apexo Root Elevators



TW2-110
Fig. 301
Apexo
2.5mm

TW2-111
Fig. 302
Apexo
2.5mm

TW2-112
Fig. 303
Apexo
2.5mm

TW2-113
Fig. 301W
Seldin
3mm

TW2-114
Fig. 304W
Seldin
3mm

ROOT ELEVATOR



- Элеватор корневой экстракционный
- Elevator coronevii ekstraktsionnyy
- Elévateurs à racines
- Elevadores para raices
- Wurzelheber
- المصاعد الجذر

Wisdom Roots Elevator



TW2-115
Wisdom
for 18 and 38

TW2-116
Wisdom
for 28 and 48

Bayonet Roots Elevator Set



TW2-117
Left

TW2-118
Right

TW2-119
bayonet

TW2-120
Curved

TW2-121
Straight

Roots Elevator



TW2-122
Fig. 60

TW2-123
Fig. 61

TW2-124
Fig. 62

TW2-125
Fig. 63



Luxier Roots Elevator



TW2-126
Luxier
3mm, Straight

TW2-127
Luxier
3mm, Curved

TW2-128
Luxier
5mm, Straight

TW2-129
Luxier
3mm, Angular

- Elevator корневой экстракционный
- Elévateurs à racines
- Wurzelheber
- Elevator корневий екстракційний
- Elevadores para raices
- المصاعد الجذر

Hylin Roots Elevator



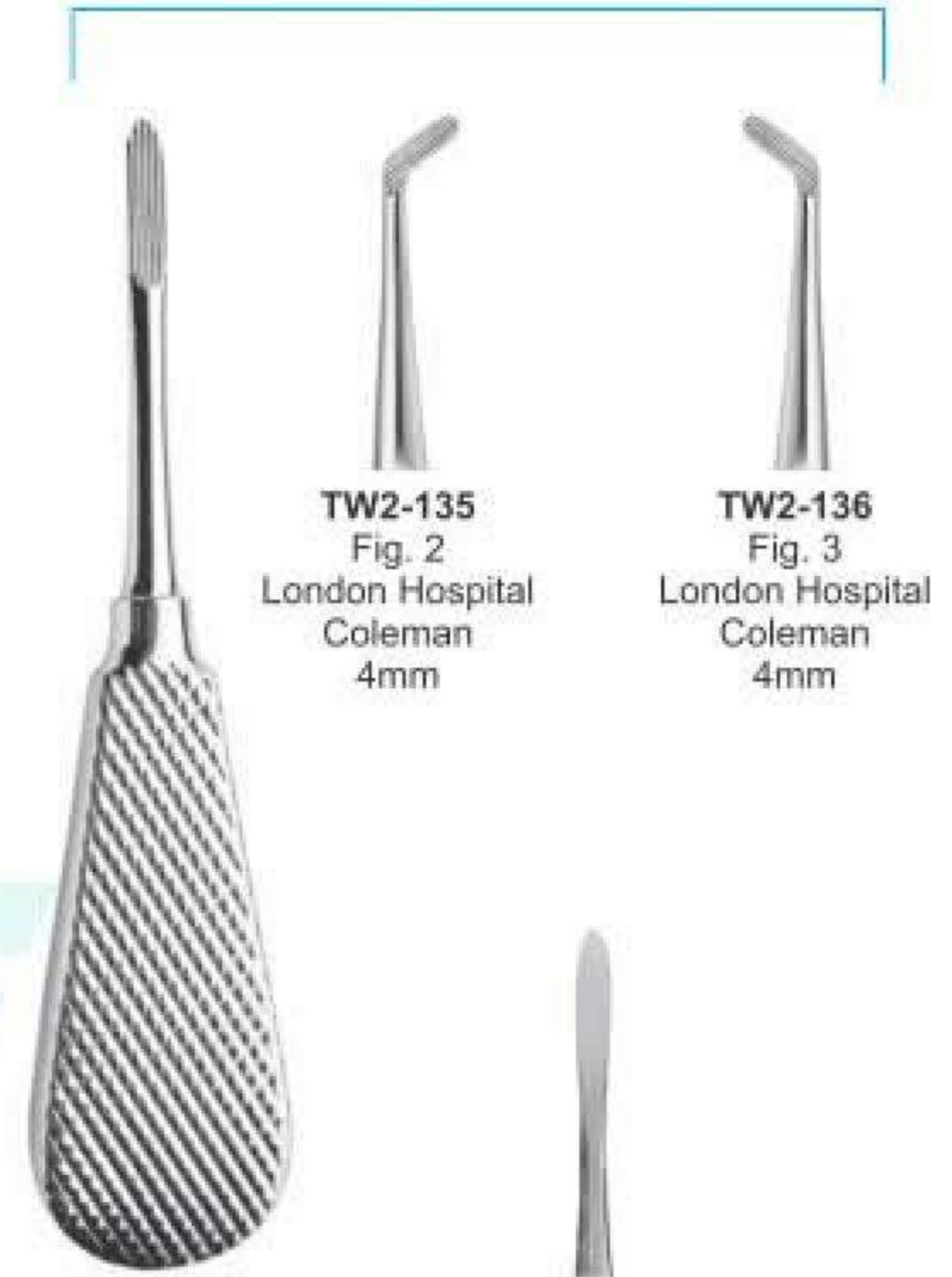
TW2-130
Hylin
3mm
Str.
Overall length
154mm

TW2-131
Hylin
4mm
Str.

TW2-132
Hylin
3.5mm
Left

TW2-133
Hylin
3.5mm
Right

Coleman Root Elevator



TW2-134
Fig. 1
London Hospital
Coleman
5mm

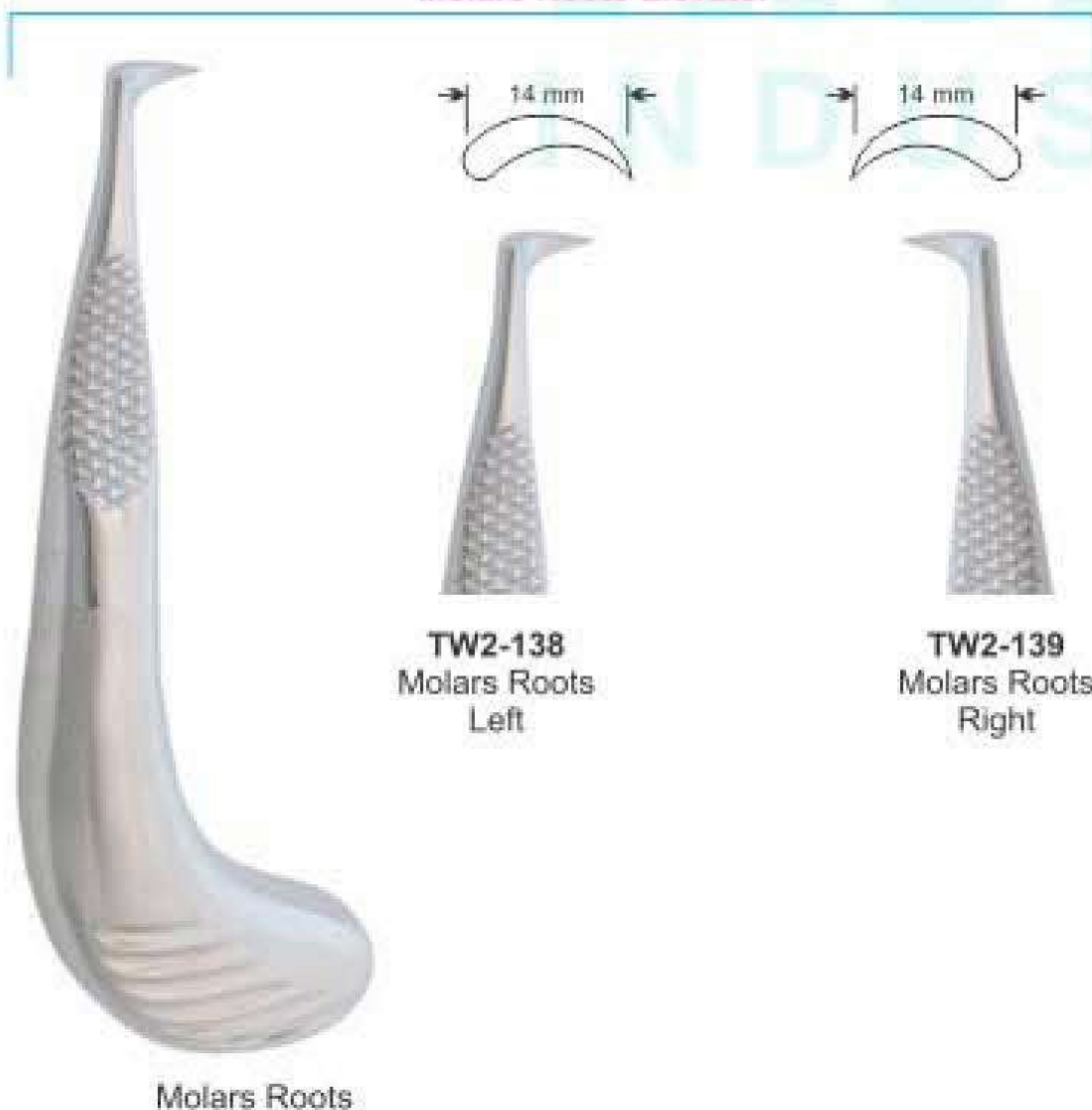
TW2-135
Fig. 2
London Hospital
Coleman
4mm

TW2-136
Fig. 3
London Hospital
Coleman
4mm

TW2-137
Fig. 4
London Hospital
Coleman
5mm

Molars Roots Elevator

Schlemmer Roots Elevator



TW2-138
Molars Roots
Left

TW2-139
Molars Roots
Right



TW2-141
Schlemmer
Fig. 2

TW2-142
Schlemmer
Fig. 3

TW2-140
Schlemmer
Fig. 1

ROOT ELEVATOR



- Elevator корневой экстракционный
- Elévateurs à racines
- Wurzelheber
- Elevator корневий екстракційний
- Elevadores para raices
- المصاعد الجذر

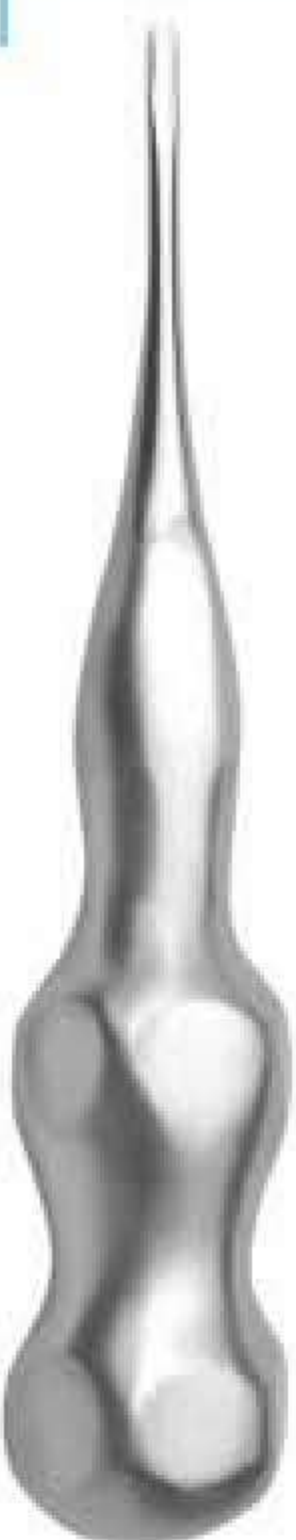
Medan Roots Elevator



Medan Roots Elevator



Roots Elevator



- Elevator корневой экстракционный
- Elévateurs à racines
- Wurzelheber
- Elevator corneviy ekstraktsionniy
- Elevadores para raices
- المصاعد الجذر



Root Elevators



TW2-169
Bein
2mm
round

TW2-170
Bein
3mm
round

TW2-171
Bein
4mm
round

TW2-172
Bein
2mm
Flat

TW2-173
Bein
3mm
Flat

TW2-174
Bein
4mm
Flat

TW2-175
White
4mm

TW2-176
White
4mm



TW2-177
Berten
5mm
Lower roots



TW2-178
3mm



TW2-179
3mm



TW2-180
3mm



TW2-181
3mm

TRUEWIN INDUSTRIES



TW2-182
Flohr 3mm



TW2-183
Flohr
3mm



TW2-184
Flohr
3mm
Flat



TW2-185
Flohr
3mm
Flat



TW2-186
Cryer
10mm



TW2-187
Cryer
10mm

FUNCTION: To loosen tooth or root from bony socket prior to placement of the extraction forceps.



- Элеватор корневой экстракционный
- Elévateurs à racines
- Wurzelheber
- Elevator coronevii ekstraktsionnyy
- Elevadores para raices
- المصاعد الجذر

Kopp Roots Elevator



TW2-188
Fig. 1
Kopp
3.6mm
Upper Roots



TW2-189
Fig. 2
Kopp
3.6mm
Upper Roots



TW2-190
Fig. 3
Kopp
4.2mm
Upper Roots



TW2-191
Fig. 4
Kopp
4.2mm
Upper Roots



TW2-192
Fig. 1
Kopp
3.6mm
Lower Roots



TW2-193
Fig. 2
Kopp
3.6mm
Lower Roots



TW2-194
Fig. 3
Kopp
4.2mm
Lower Roots



TW2-195
Fig. 4
Kopp
4.2mm
Lower Roots

- Элеватор корневой экстракционный
- Elévateurs à racines
- Wurzelheber
- Elevator corneviu extracționii
- Elevadores para raices
- المصاعد الجذر

Kopp Roots Elevator



TW2-196
Kopp
Right

TW2-197
Kopp
Left

Heber Roots Elevator



TW2-198
Heber
Bayonet

TW2-199
Heber
Bayonet

Bein Roots Elevator



TW2-200
Bein
3mm

TW2-201
Bein
4mm

Bein Roots Elevator



TW2-202
Bein
2mm, curved
serrated

TW2-206
Bein
2mm, curved
serrated

TW2-210
Bein
2mm, curved
serrated

TW2-203
2mm
straight
serrated

TW2-204
3mm
straight

TW2-205
4mm
Curved

TW2-207
2mm
straight
serrated

TW2-208
3mm
straight

TW2-209
4mm
Curved

TW2-211
2mm
straight
serrated

TW2-212
3mm
straight

TW2-213
4mm
Curved

ROOT ELEVATOR



- Элеватор корневой экстракционный
- Elévateurs à racines
- Wurzelheber
- Elevator coronevii ekstraktsionnyy
- Elevadores para raices
- المصاعد الجذر

W. Barry Roots Elevator



Winter Roots Elevator



Pott Roots Elevator



- Элеватор корневой экстракционный
- Elévateurs à racines
- Wurzelheber
- Elevator coronevii ekstraktsionnyy
- Elevadores para raices
- المصاعد الجذر

Heidbrink Roots Elevator



TW2-229 Heidbrink Straight
TW2-230 Heidbrink Left
TW2-231 Heidbrink Right
TW2-232 Heidbrink Straight
TW2-233 Heidbrink Left
TW2-234 Heidbrink Right

Syndesmotomes Roots Elevator



TW2-235 Straight
TW2-236 Left
TW2-237 Right

Periotome Roots Elevator

Syndesmotomes



TW2-238 Periotome 2.1mm Straight
TW2-239 Periotome 2.6mm Straight
TW2-240 Periotome 2.1mm Angular
TW2-241 Periotome 2mm Curved
TW2-242 Periotome 2.0mm
TW2-243 Periotome 2.5mm
TW2-244 Periotome 3.0mm
TW2-245 Periotome 4.0mm

ROOT ELEVATOR



- Элеватор корневой экстракционный
- Elévateurs à racines
- Wurzelheber
- Elevator coronevii ekstraktsionnyy
- Elevadores para raices
- المصاعد الجذر

FUNCTION: To loosen small root fragments from bony socket



- Элеватор корневой экстракционный
- Elévateurs à racines
- Wurzelheber
- Elevator coronevii ekstraktsionnyy
- Elevadores para raices
- المصاعد الجذر



TW2-255
Fig. 1S
(Straight 1mm)



TW2-256
Fig. 2S
(Straight 2mm)



TW2-257
Fig. 3S
(Straight 3mm)



TW2-258
Fig. 5S
(Straight 5mm)



TW2-259
Fig. 3C
(Curved 3mm)



TW2-260
Fig. 5C
(Curved 5mm)



TW2-261
Fig. 3CA
(Curved Angle 3mm)



TW2-262
Fig. 3IC
(Inverted Curved 3mm)



TW2-263
Fig. DE 3
(Dual Edge 3mm / 1.5mm)



TW2-264
Fig. DE 5
(Dual Edge 5mm / 3mm)

ROOT ELEVATOR



- Элеватор корневой экстракционный
- Elévateurs à racines
- Wurzelheber
- Elevator coronevii ekstraktsionnyy
- Elevadores para raices
- المصاعد الجذر

TW2-265 Blue Plasma Coated PDL Elevators Set of 7 Pcs



Area: distal



Area: mesial



TW2-280 PDL Elevators Set of 7 Pcs

- Элеватор корневой экстракционный
- Elévateurs à racines
- Elevator coronevii ekstraktsionnyy
- Elevadores para raices

PDL ELEVATORS

Delicate Arrow tip



TW2-281
4,0mm
straight

TW2-282
4,0mm
curved

Luxivators straight
atraumatic luxation of the tooth



TW2-283
2,5mm
straight

TW2-284
3,5mm
straight

TW2-285
4,5mm
straight

Luxivators curved
atraumatic luxation of the tooth



TW2-286
2,5mm
curved

TW2-287
3,5mm
curved

TW2-288
4,5mm
curved



Area: approximal (mesial, distal)



for loosening of the tooth

TW2-289
PDL Elevators
Set of 8 Pcs